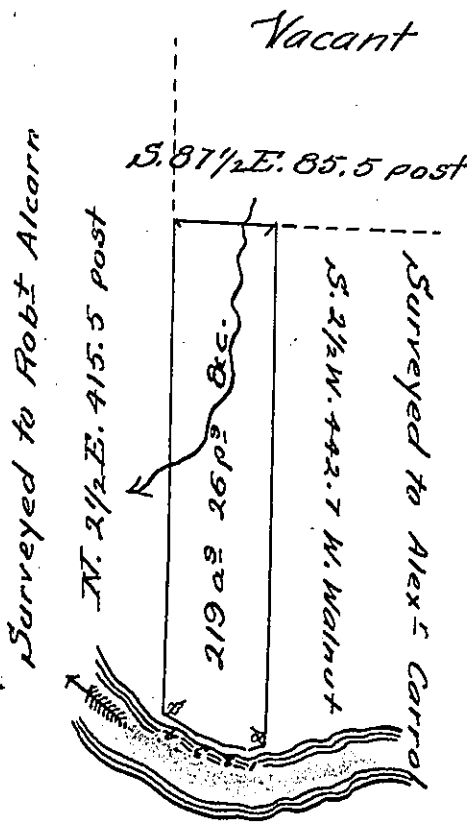


Courses & distances down
River from W. Walnut.

- No 1 S. 82 W. 10
- " 2 N. 80 W. 24
- " 3 N. 65 W. 24
- " 4 N. 58 W. 34 to B. Oak



DRAFT of a tract of land situate in Cornplanter township, Venango County North and west of and adjoining the Allegheny River, being the Western part or half of a larger tract originally settled by Samuel Hulings and others.

Surveyed 8th December 1837, for William and Andrew Howe, on improvement & Settlement.

Richd Irwin D.S.

The above was recd of Richd Irwin Esq^r Late Deputy Surveyor 27 May 1851 to Enter and make return thereof and is approved of by me.

Matthew Fiddle D.S.

IN TESTIMONY that the above is a copy of the original remaining on file in the Department of Internal Affairs of Pennsylvania, made conformably to an Act of Assembly approved the 16th day of February, 1833, I have hereunto set my Hand and caused the Seal of said Department to be affixed at Harrisburg, this Twenty-Seventh day of May 1905.

James D. Johnson
Secretary of Internal Affairs.